

Fattoria di Monselvoli srl



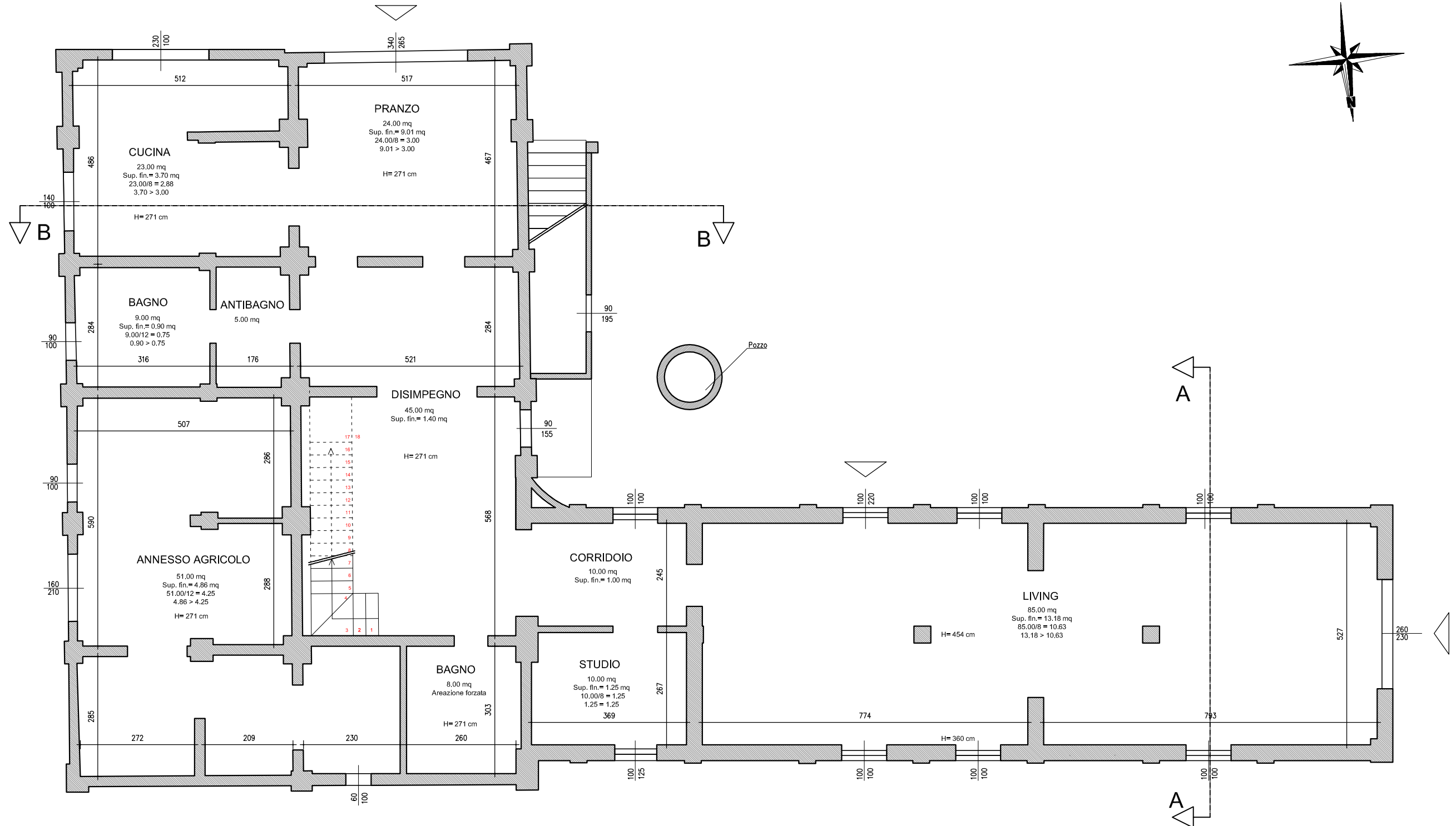
Corso Italia, 26 - 50125 Firenze
Tel. 0552658104
e-mail s.pittalis@ps2progetti.it

PS2
PROGETTI

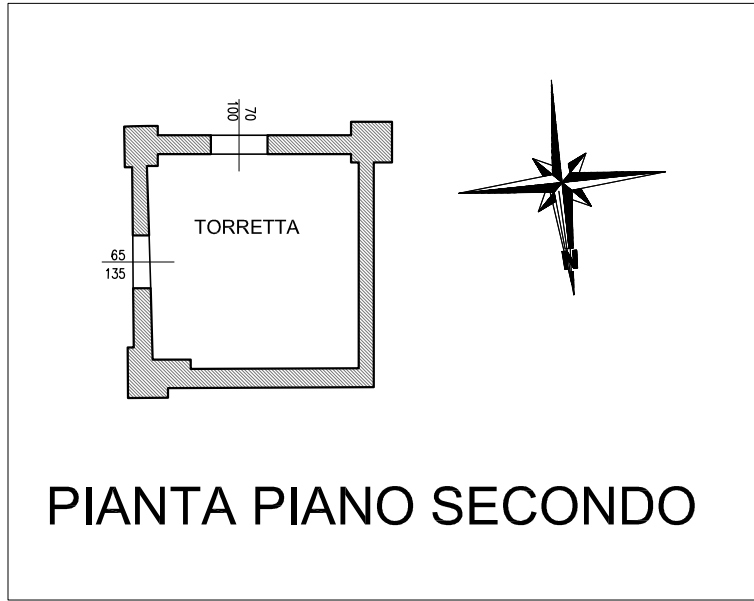
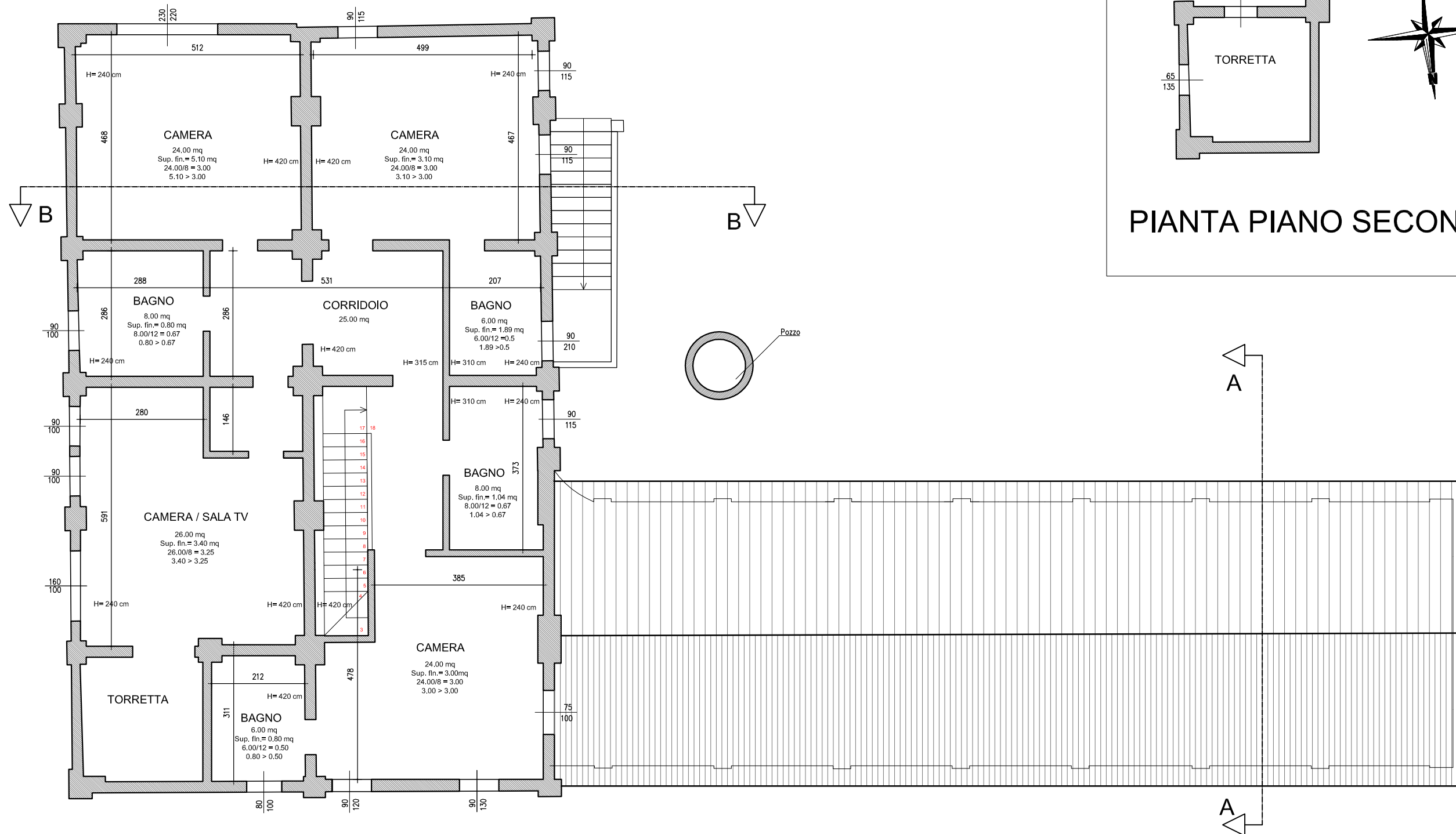
Suddivisione in più unità immobiliari del podere *Teleferica*

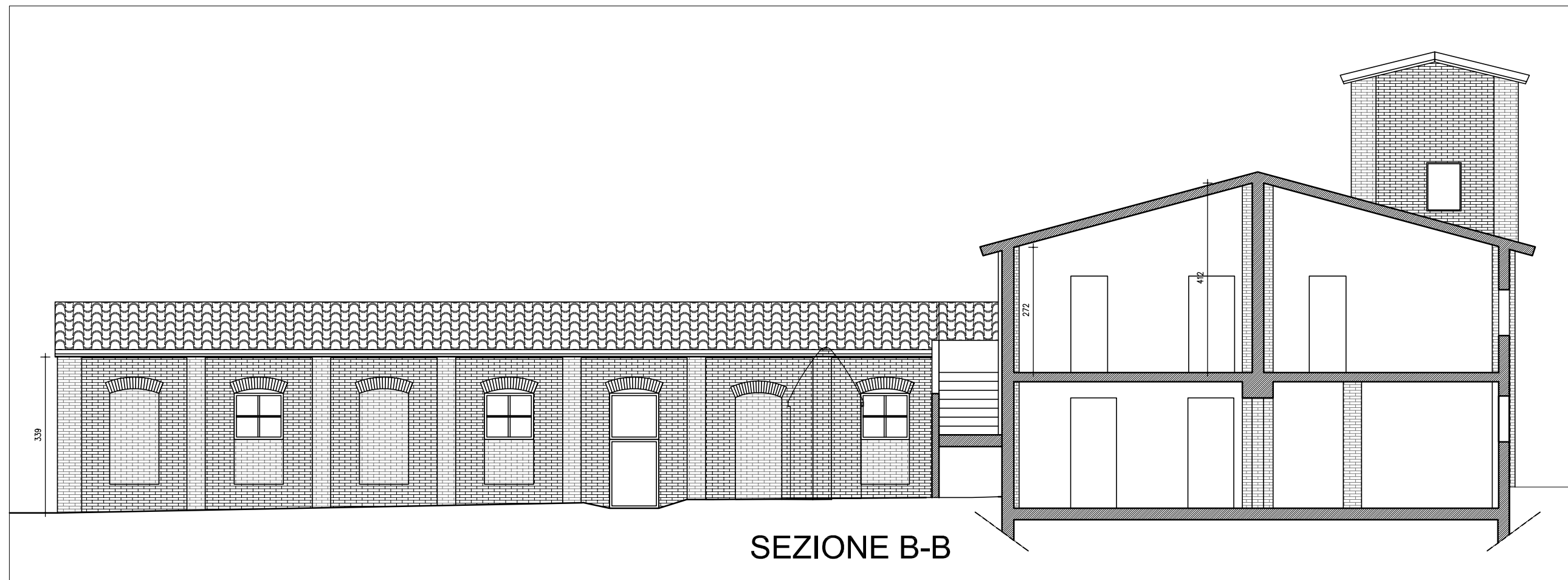
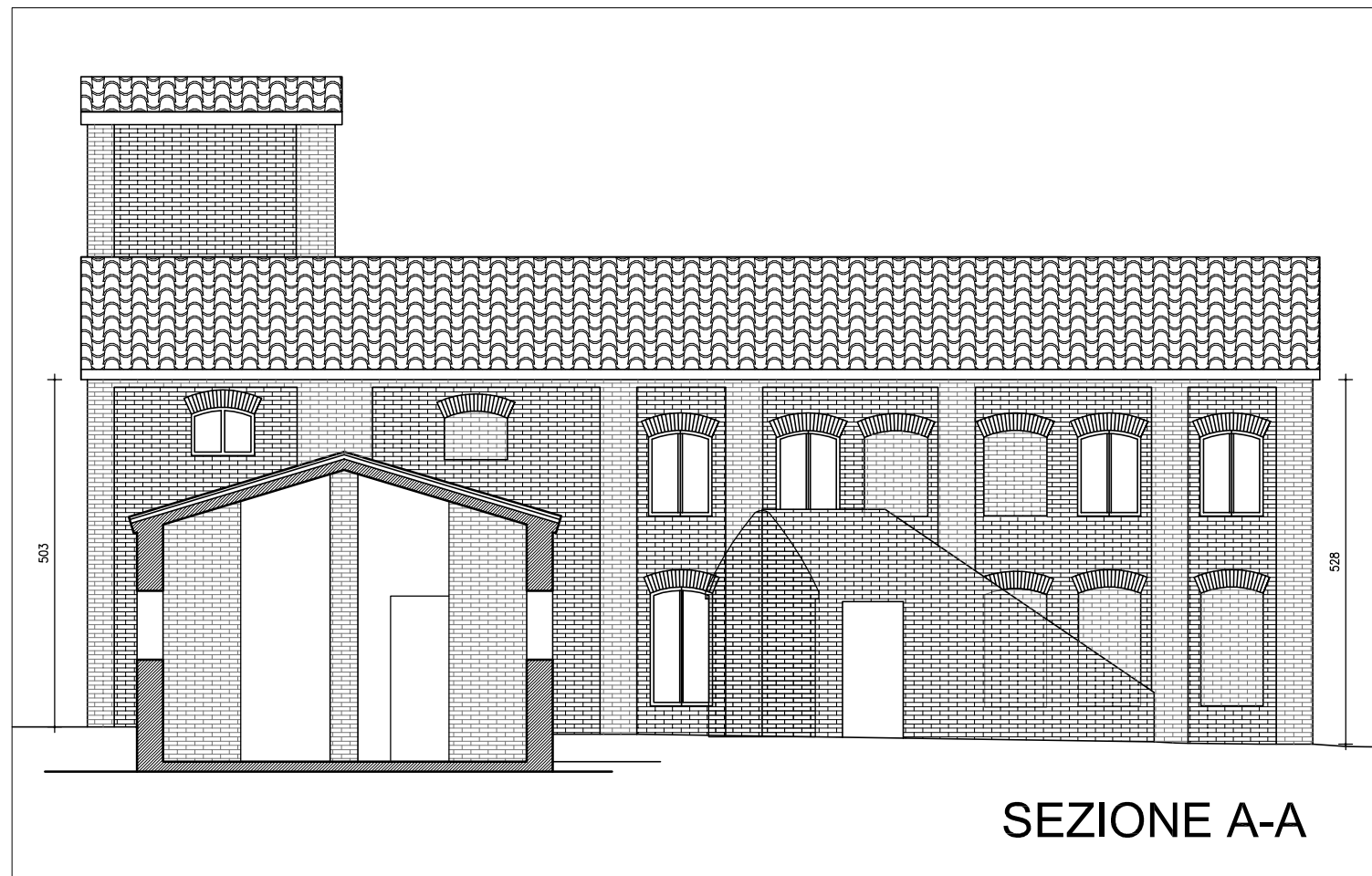
Committente: Fattoria di Monselvoli srl

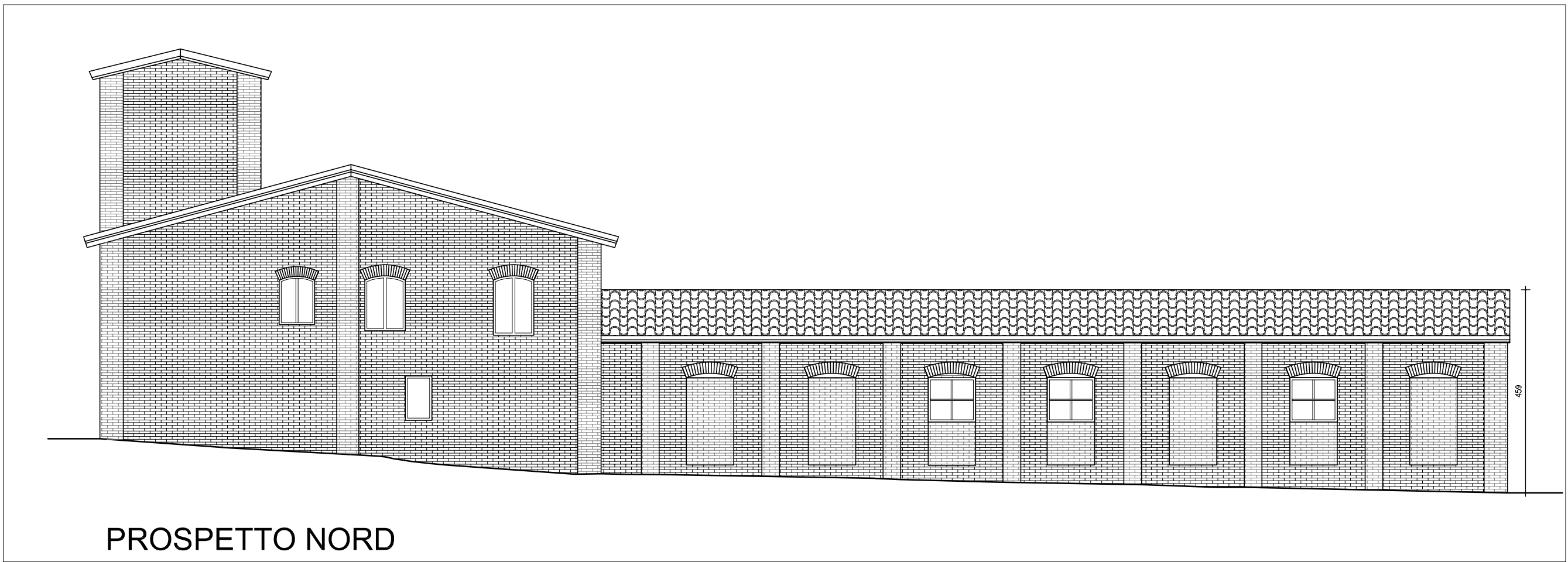
Progetto: PS2Progetti



PIANTA PIANO TERRENO



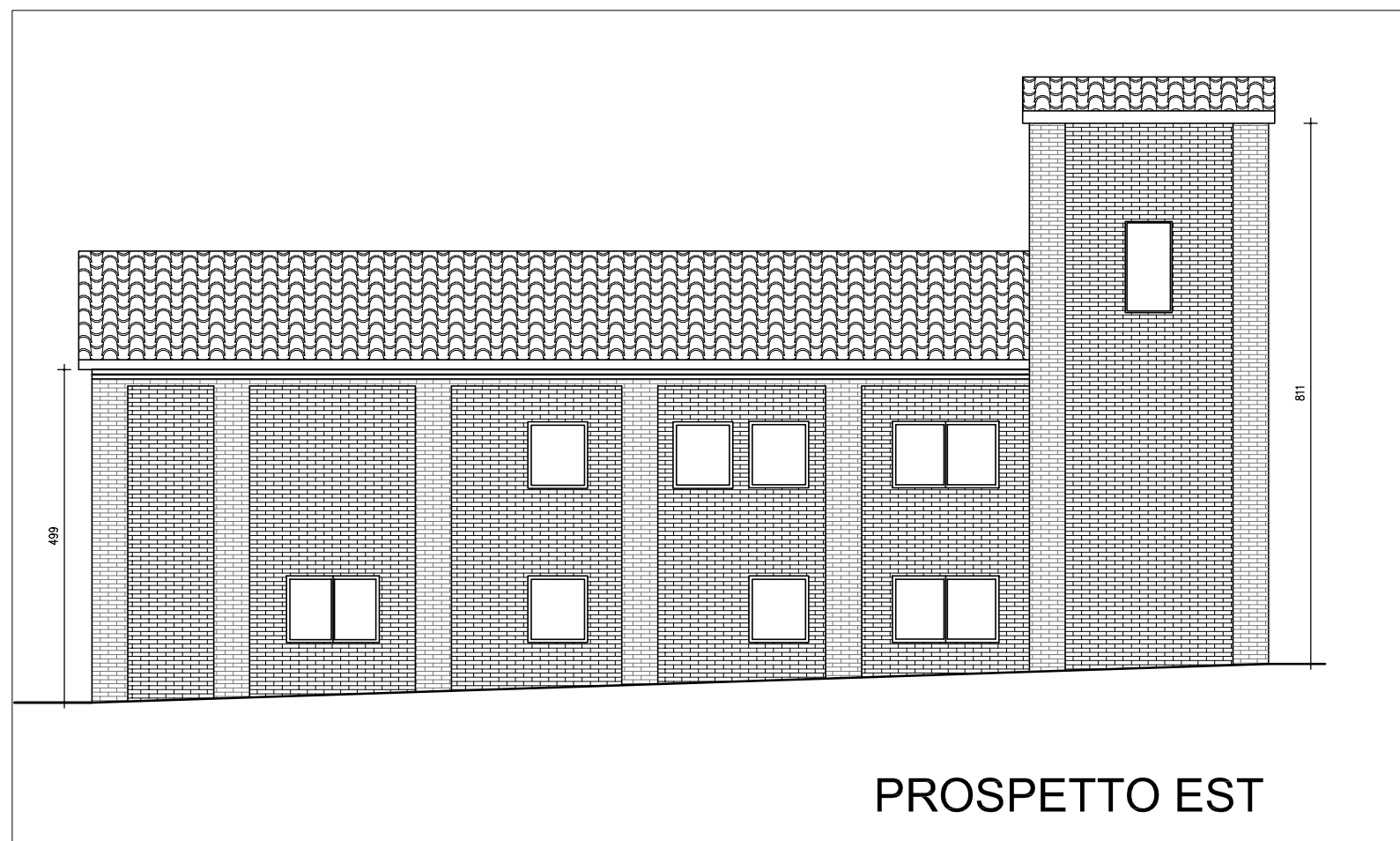


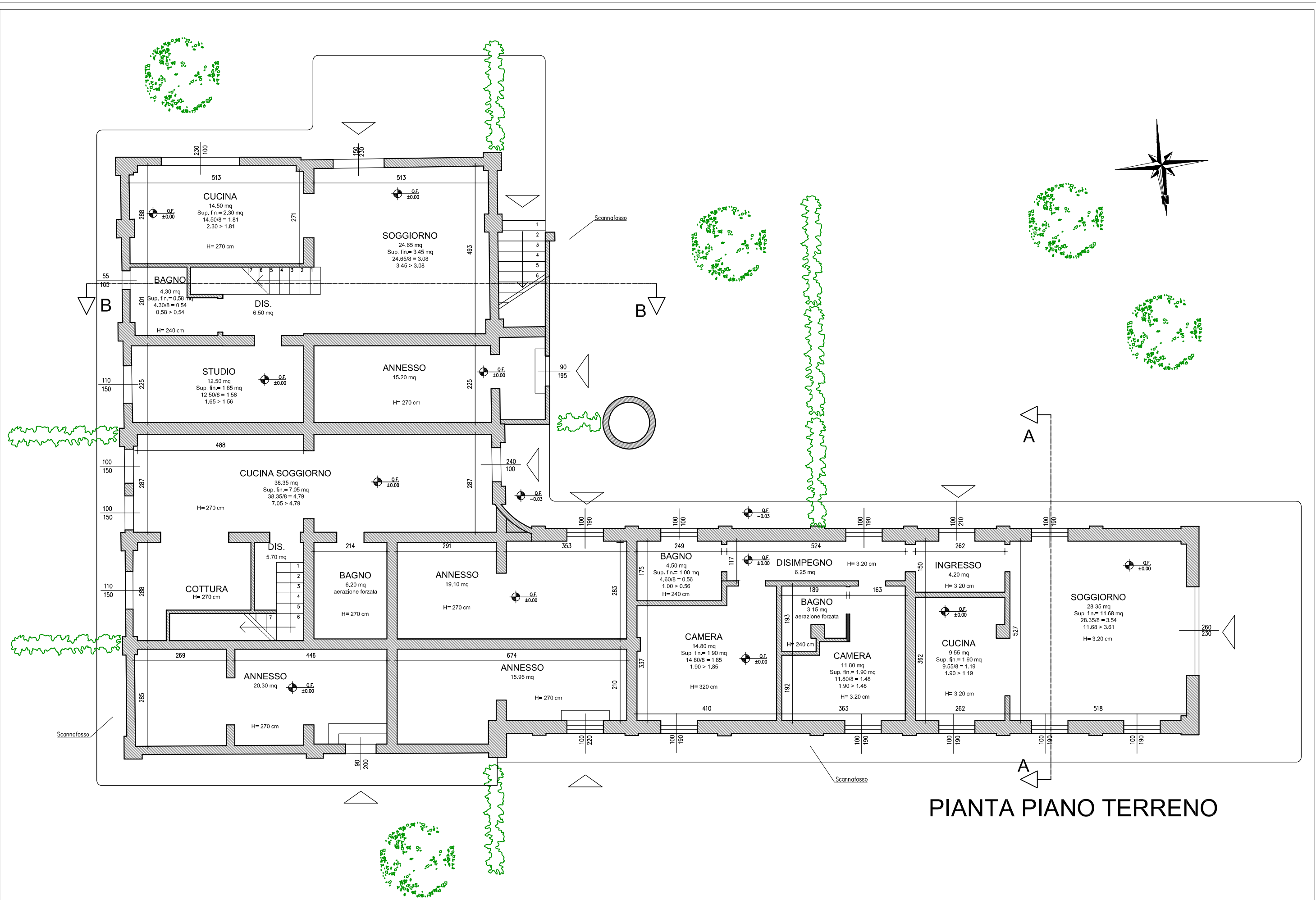


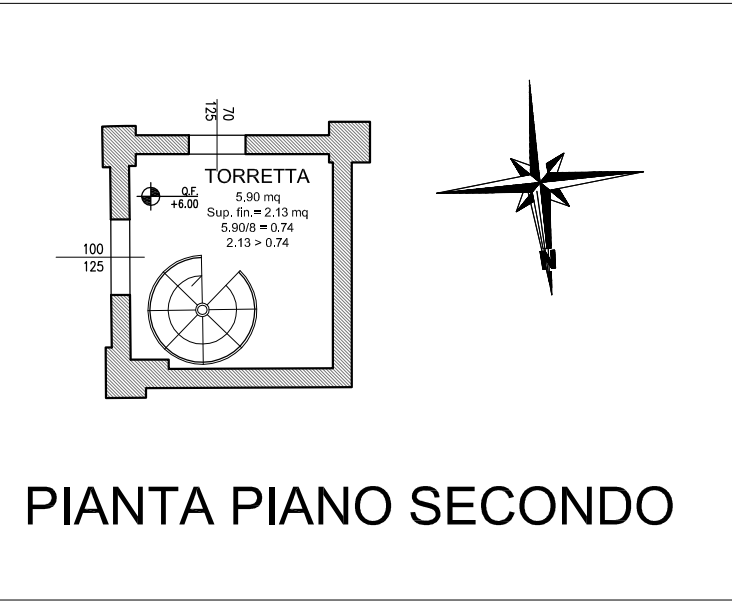
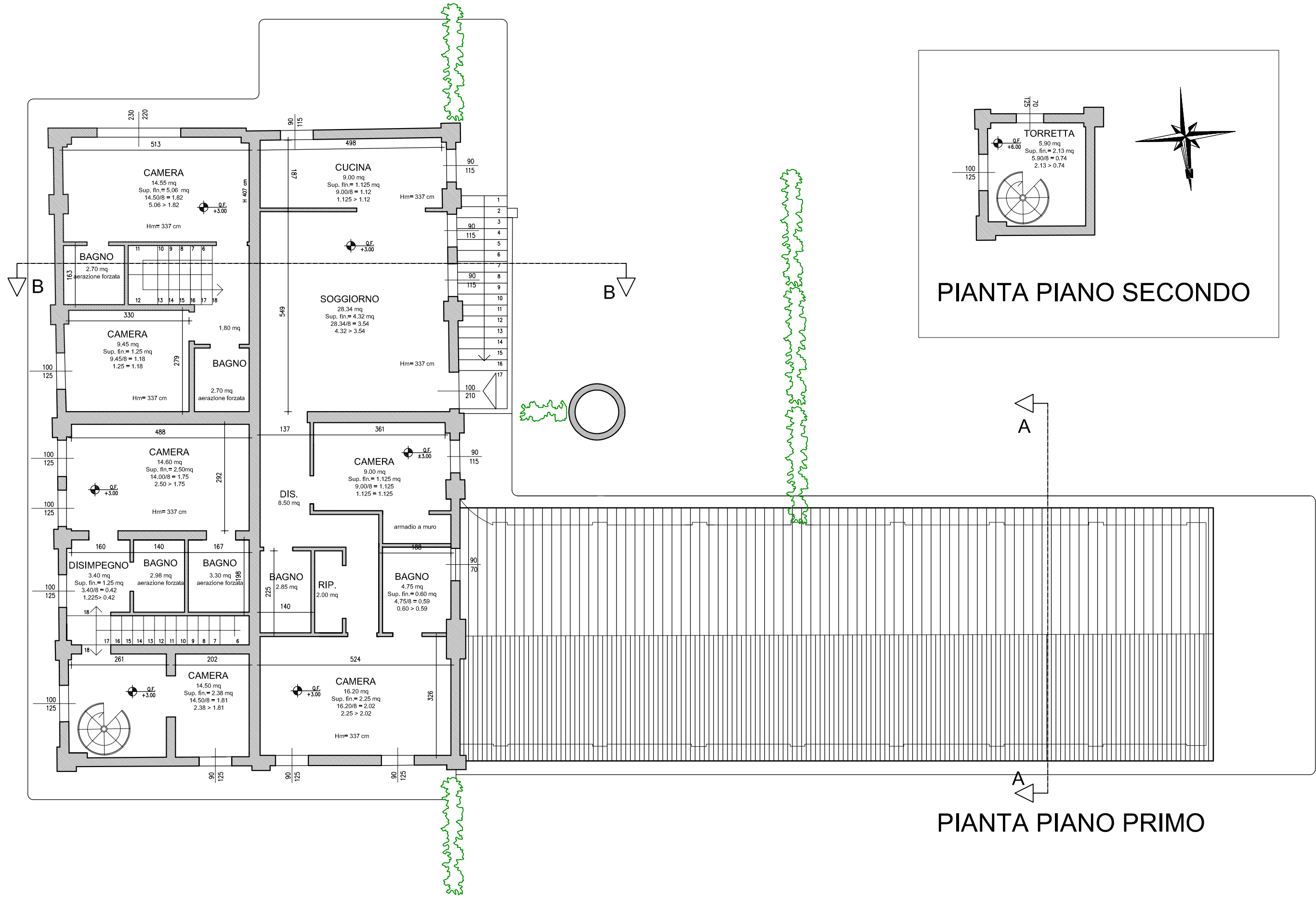
PROSPETTO NORD



PROSPETTO SUD

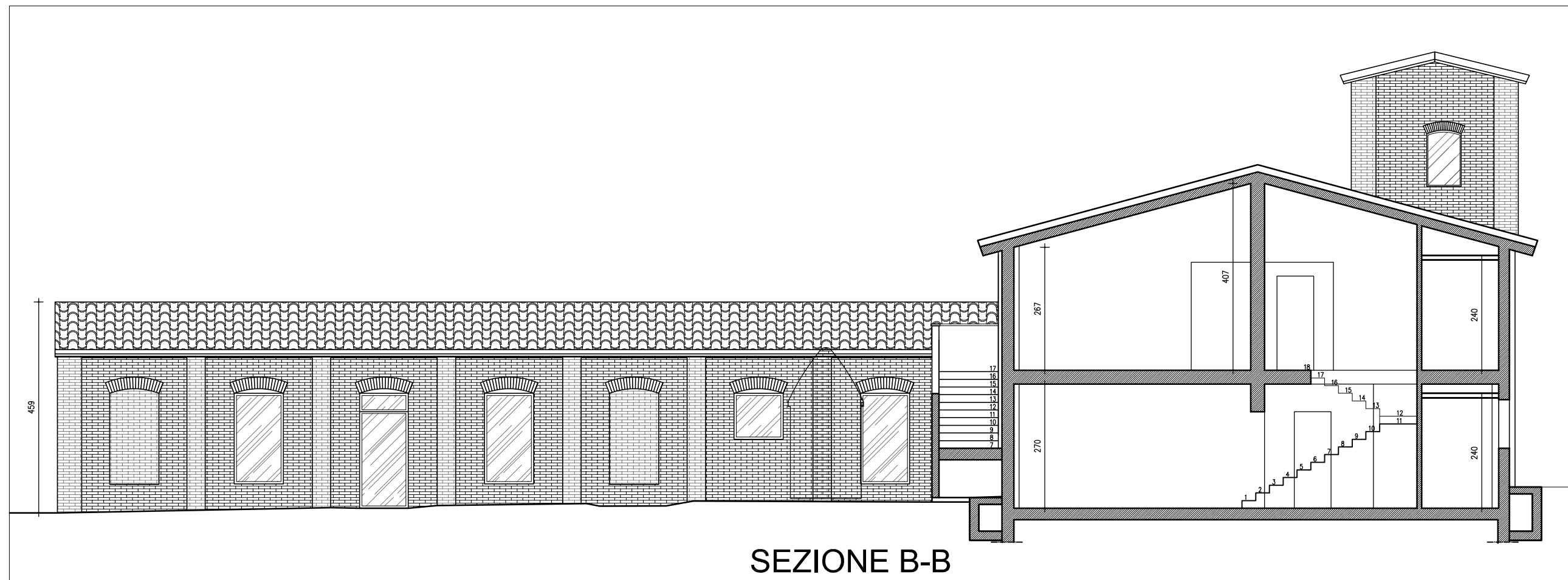
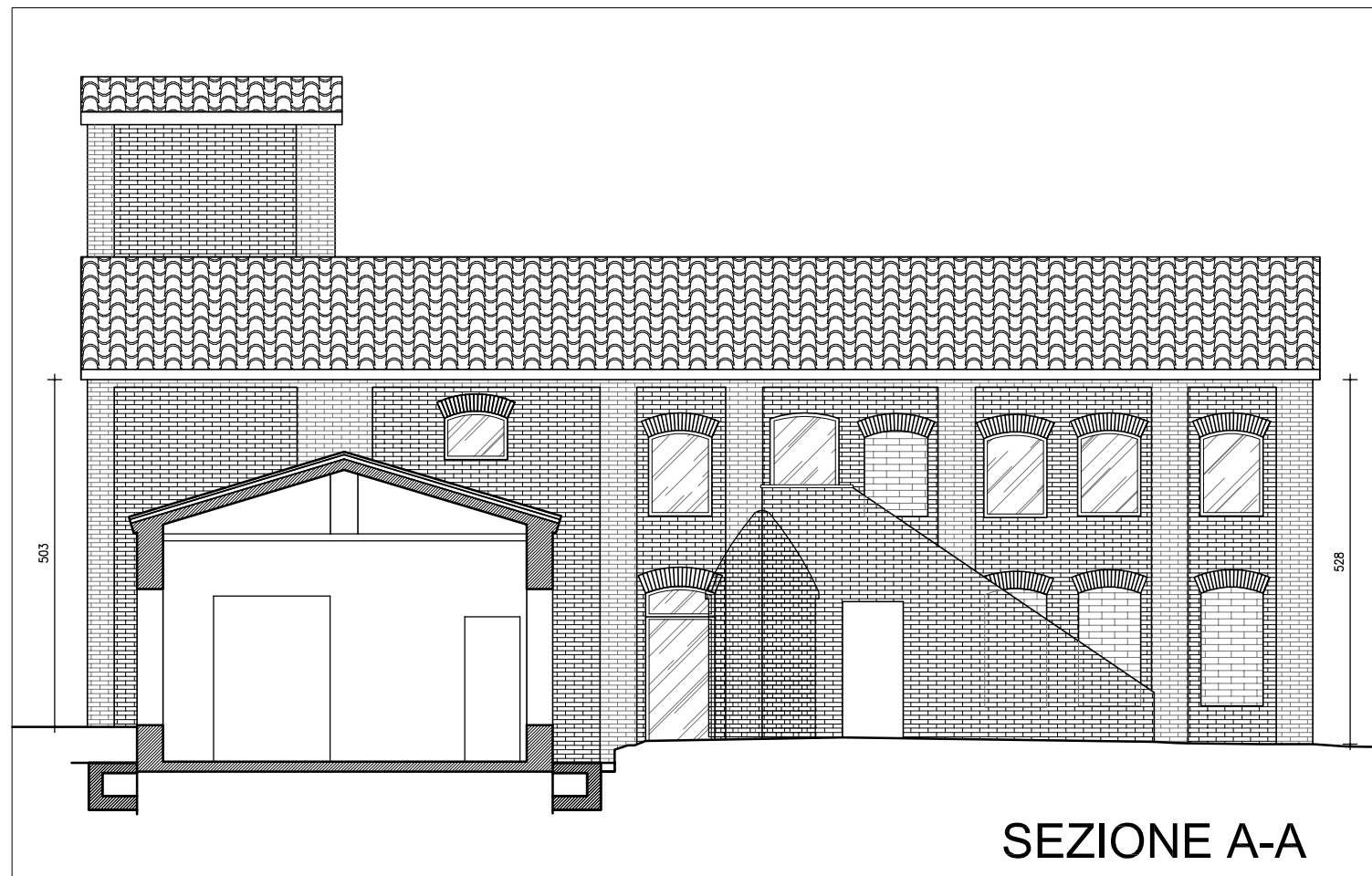


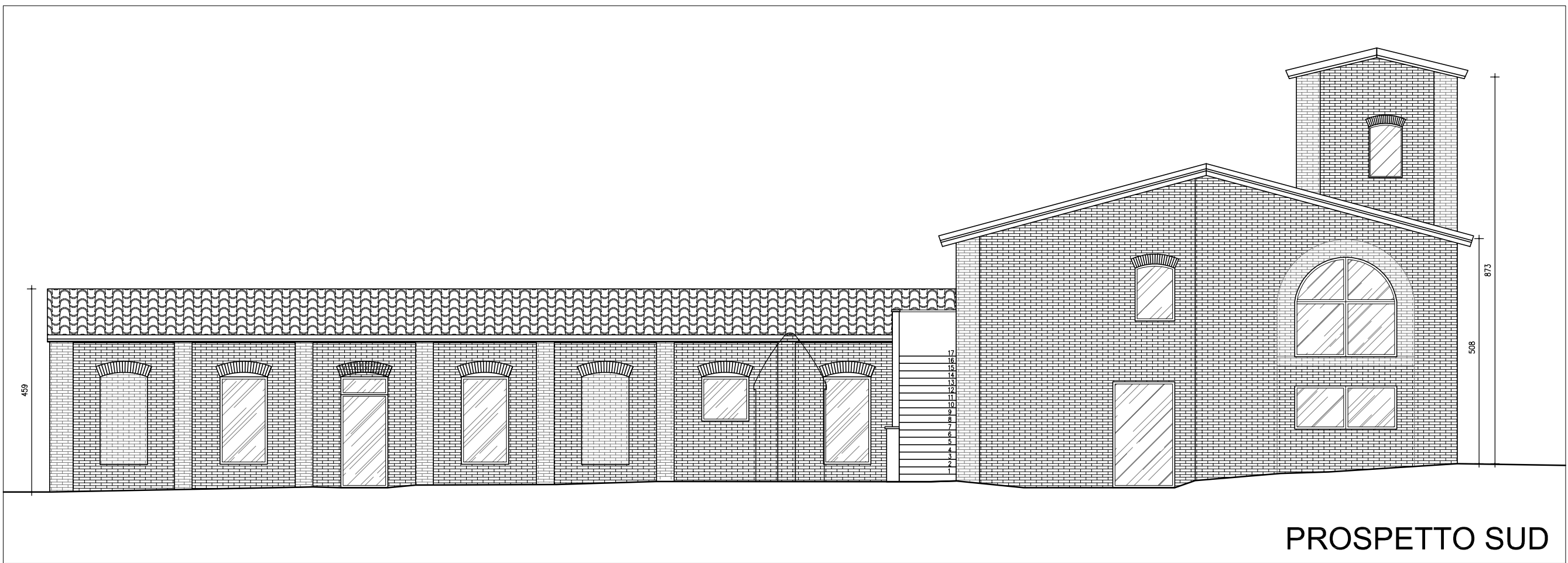
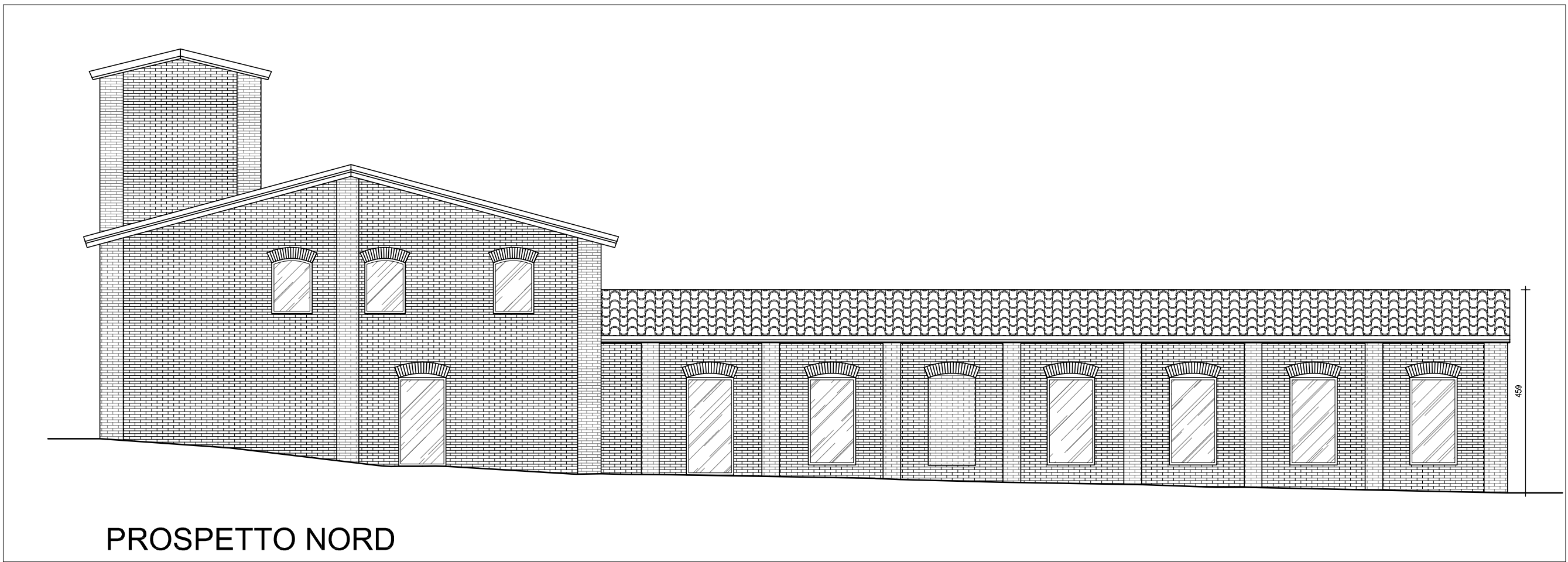


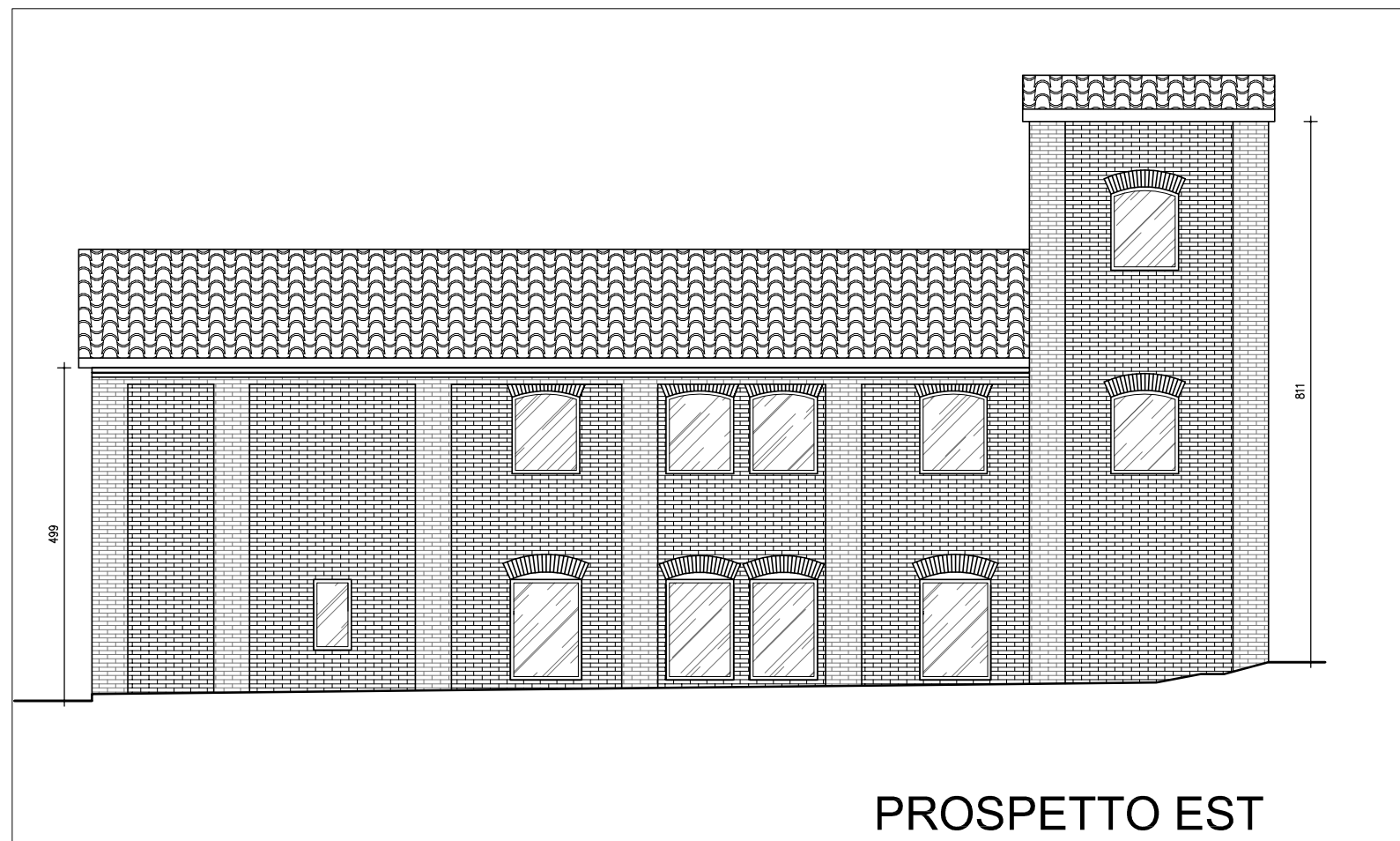


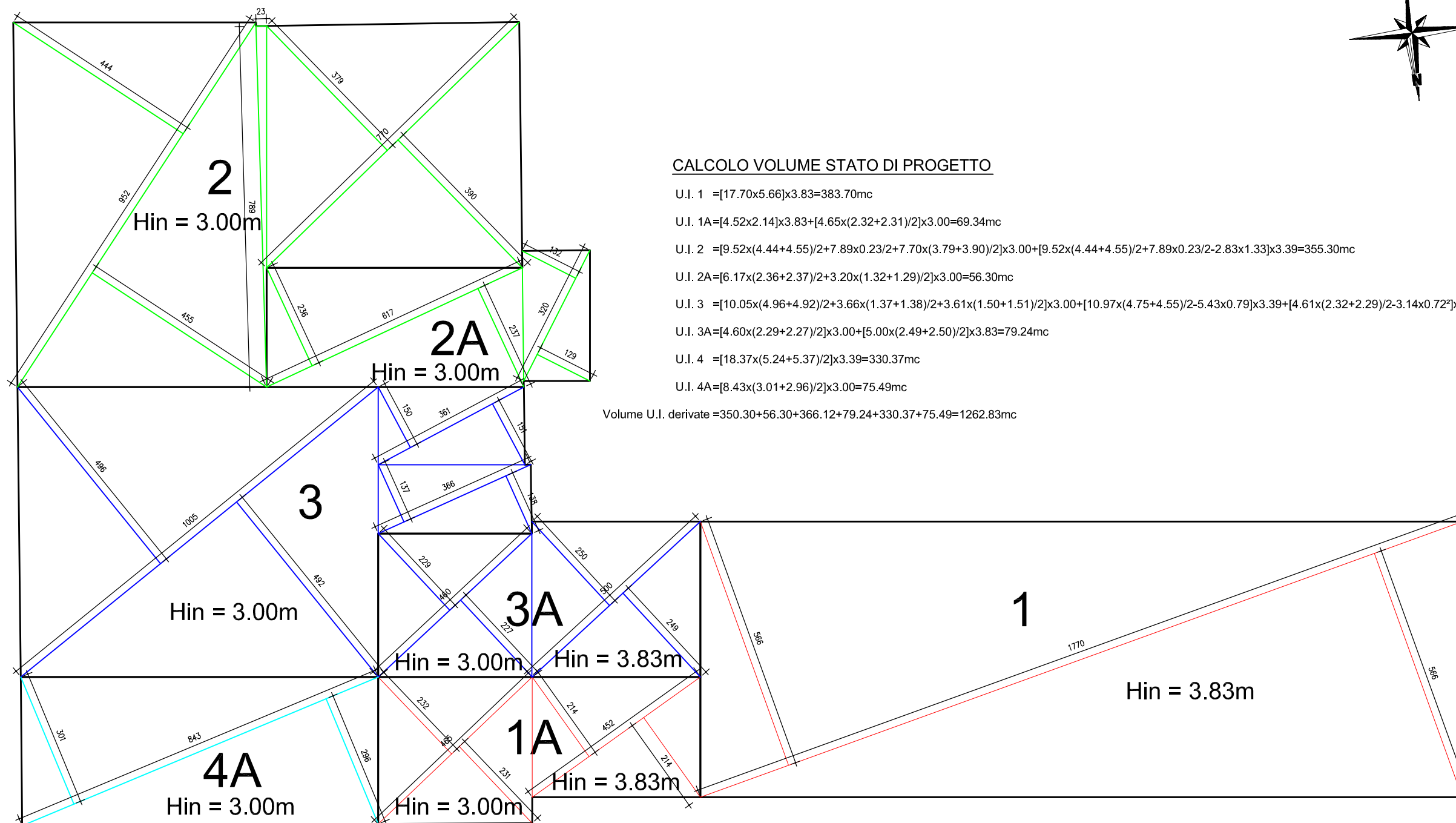
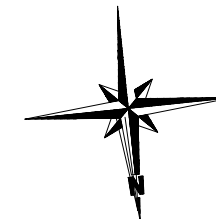
PIANTA PIANO SECONDO

PIANTA PIANO PRIMO









CALCOLO VOLUME STATO DI PROGETTO

$$U.I. 1 = [17.70 \times 5.66] \times 3.83 = 383.70 \text{mc}$$

$$U.I. 1A = [4.52 \times 2.14] \times 3.83 + [4.65 \times (2.32 + 2.31) / 2] \times 3.00 = 69.34 \text{mc}$$

$$U.I. 2 = [9.52 \times (4.44 + 4.55) / 2 + 7.89 \times 0.23 / 2 + 7.70 \times (3.79 + 3.90) / 2] \times 3.00 + [9.52 \times (4.44 + 4.55) / 2 + 7.89 \times 0.23 / 2 - 2.83 \times 1.33] \times 3.39 = 355.30 \text{mc}$$

$$U.I. 2A = [6.17 \times (2.36 + 2.37) / 2 + 3.20 \times (1.32 + 1.29) / 2] \times 3.00 = 56.30 \text{mc}$$

$$U.I. 3 = [10.05 \times (4.96 + 4.92) / 2 + 3.66 \times (1.37 + 1.38) / 2 + 3.61 \times (1.50 + 1.51) / 2] \times 3.00 + [10.97 \times (4.75 + 4.55) / 2 - 5.43 \times 0.79] \times 3.39 + [4.61 \times (2.32 + 2.29) / 2 - 3.14 \times 0.72] \times 3.03 = 366.12 \text{mc}$$

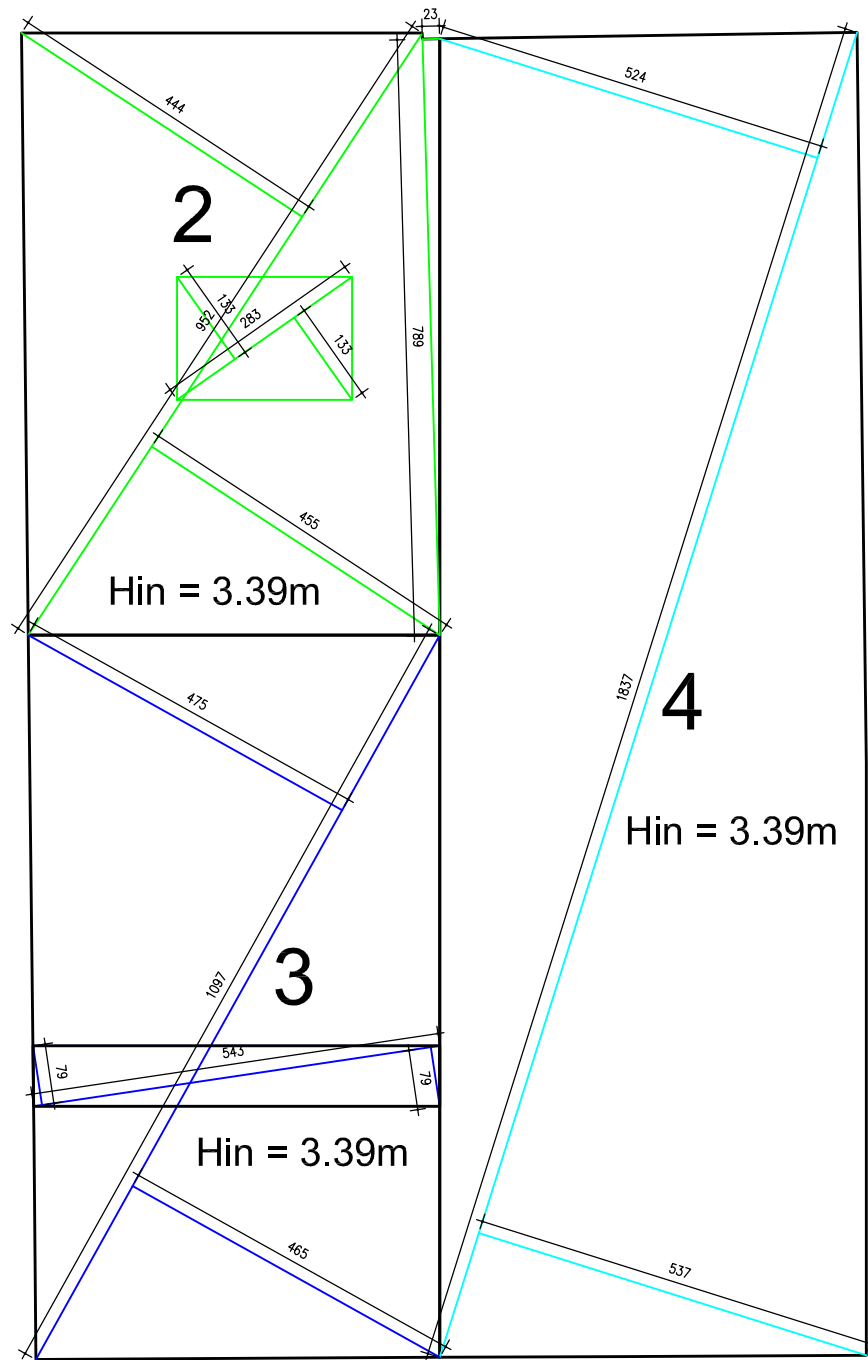
$$U.I. 3A = [4.60 \times (2.29 + 2.27) / 2] \times 3.00 + [5.00 \times (2.49 + 2.50) / 2] \times 3.83 = 79.24 \text{mc}$$

$$U.I. 4 = [18.37 \times (5.24 + 5.37) / 2] \times 3.39 = 330.37 \text{mc}$$

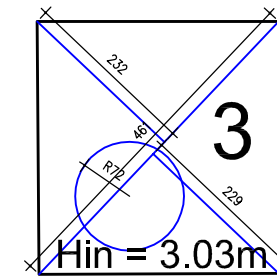
$$U.I. 4A = [8.43 \times (3.01 + 2.96) / 2] \times 3.00 = 75.49 \text{mc}$$

$$\text{Volume U.I. derivate} = 350.30 + 56.30 + 366.12 + 79.24 + 330.37 + 75.49 = 1262.83 \text{mc}$$

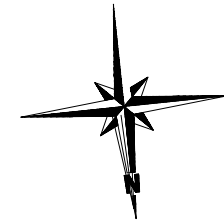
PIANTA PIANO TERRENO



PIANTA PIANO PRIMO

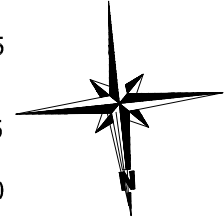


PIANTA PIANO SECONDO

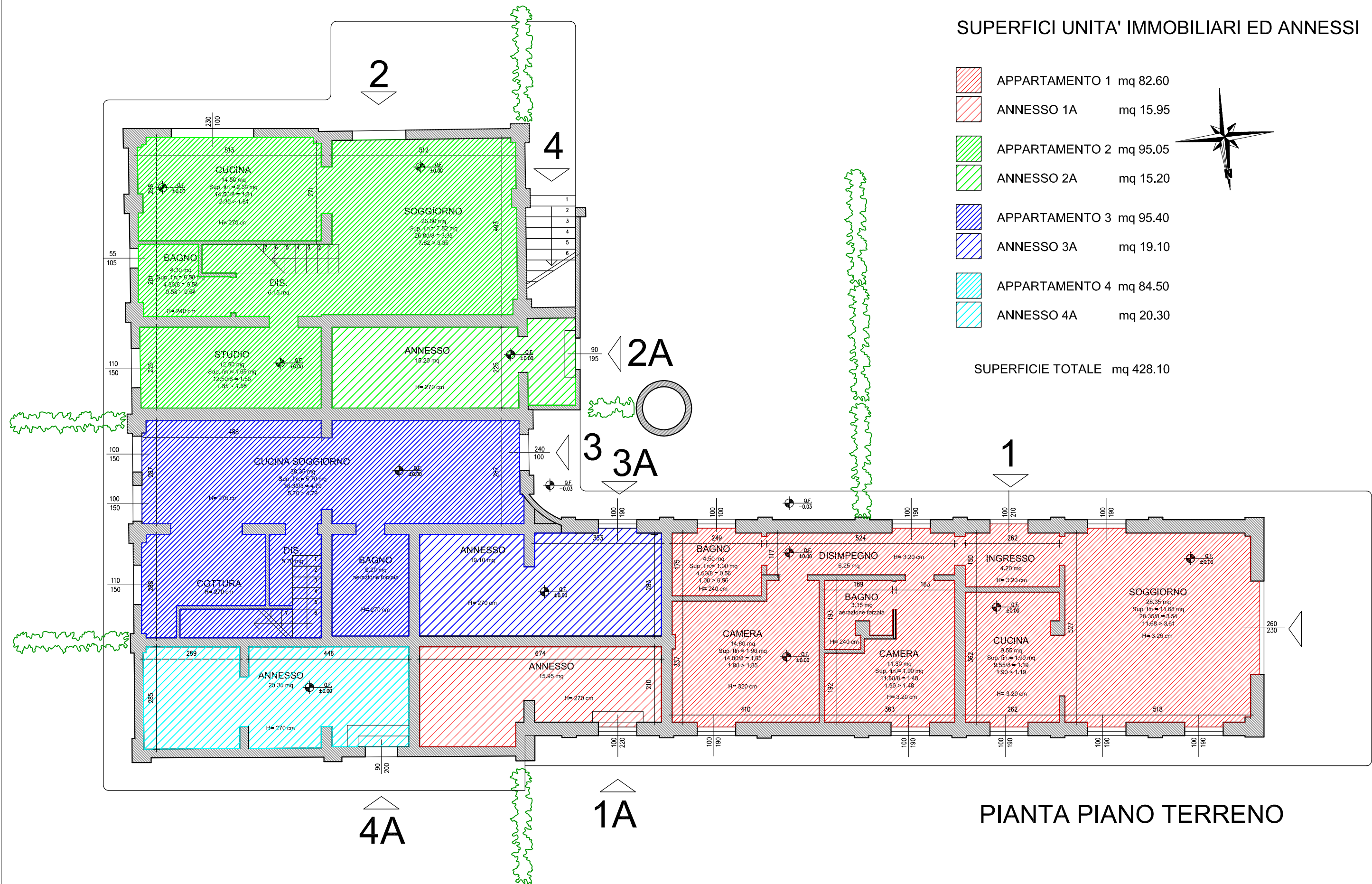


SUPERFICI UNITA' IMMOBILIARI ED ANNESSI

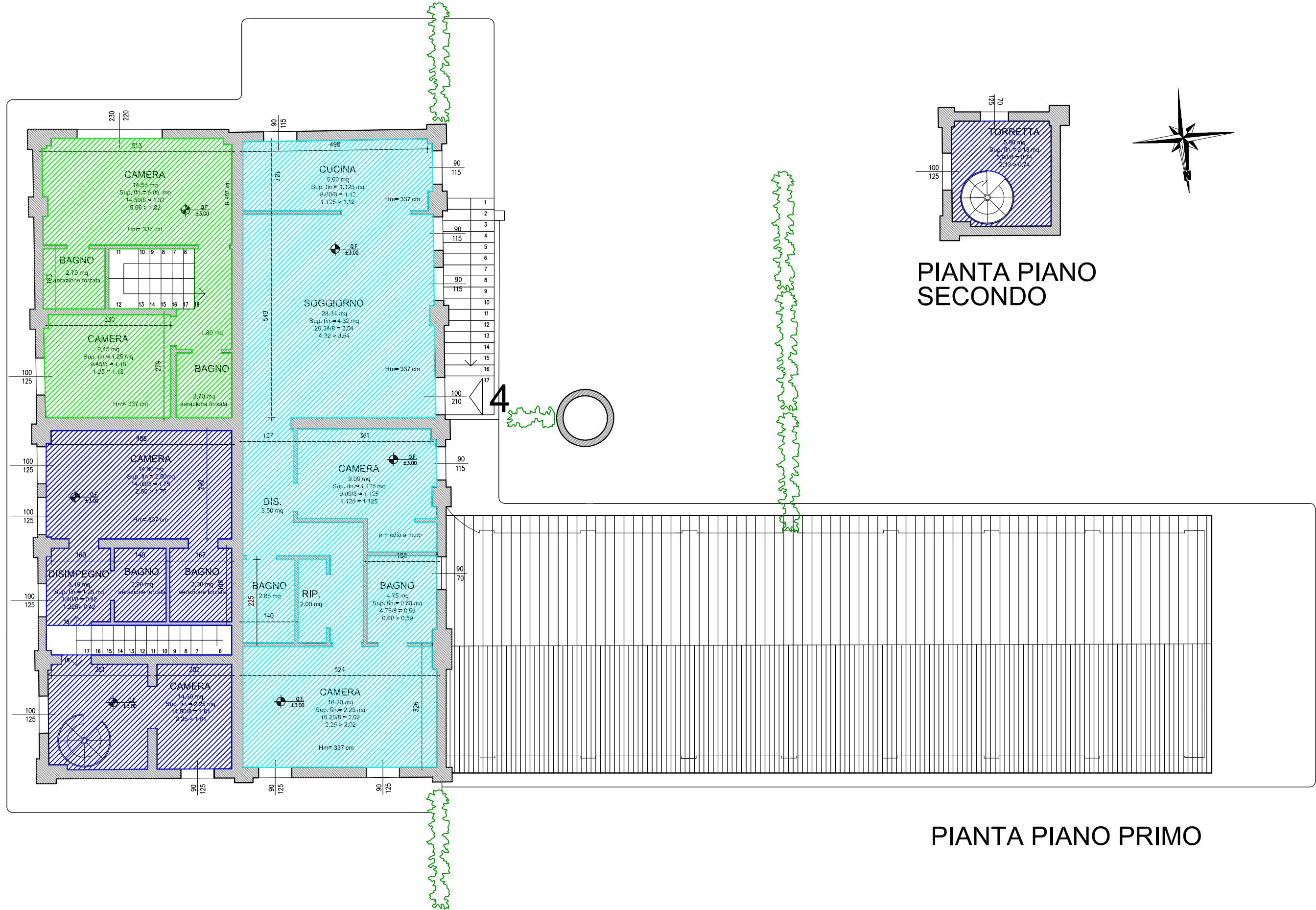
-  APPARTAMENTO 1 mq 82.60
-  ANNESSO 1A mq 15.95
-  APPARTAMENTO 2 mq 95.05
-  ANNESSO 2A mq 15.20
-  APPARTAMENTO 3 mq 95.40
-  ANNESSO 3A mq 19.10
-  APPARTAMENTO 4 mq 84.50
-  ANNESSO 4A mq 20.30

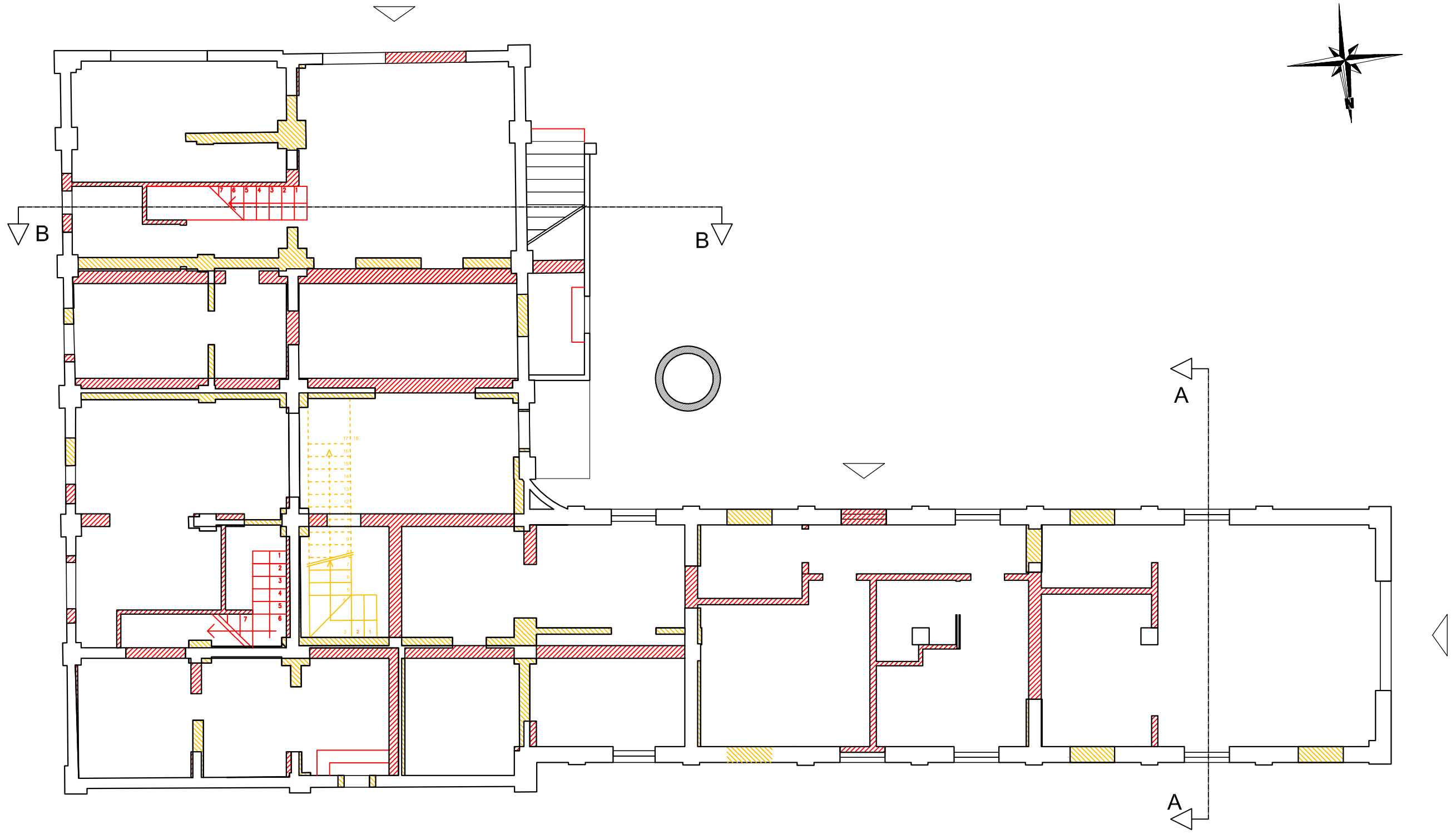


SUPERFICIE TOTALE mq 428.10



PIANTA PIANO TERRENO





PIANTA PIANO TERRENO

